

The Contributions of Forests and Socioeconomics in Region 5

Mark Metcalfe
Regional Economist



Topics to Cover

- Forest Contributions are the Starting Point for Socioeconomics in R5

Topics to Cover

- Forest Contributions are the Starting Point for Socioeconomics in R5
- How we currently use this information in Planning

Topics to Cover

- Forest Contributions are the Starting Point for Socioeconomics in R5
- How we currently use this information in Planning
- How we can use this information in project NEPA socioeconomic analysis

Contributions of National Forests in California

- 18 National Forests - 20 million acres (20% of CA)

Contributions of National Forests in California

- 18 National Forests - 20 million acres (20% of CA)
- Landscapes provide 50 % of the water in California

Contributions of National Forests in California

- 18 National Forests - 20 million acres (20% of CA)
- Landscapes provide 50 % of the water in California
- Account for 25 percent of National Forest recreation nationwide and about half the public wildland recreation in the state.

Contributions of National Forests in California

- 18 National Forests - 20 million acres (20% of CA)
- Landscapes provide 50 % of the water in California
- Account for 25 percent of National Forest recreation nationwide and about half the public wildland recreation in the state.
- FY14: provided 588,000 ccf of sawtimber (67%), biomass (19%) and firewood (14%).

Contributions of National Forests in California

- 18 National Forests - 20 million acres (20% of CA)
- Landscapes provide 50 % of the water in California
- Account for 25 percent of National Forest recreation nationwide and about half the public wildland recreation in the state.
- FY14: provided 588,000 ccf of sawtimber (67%), biomass (19%) and firewood (14%).
- FY13: provided 368 permittees with grazing opportunities for close to 100,000 animals

Contributions of National Forests in California

- 18 National Forests - 20 million acres (20% of CA)
- Landscapes provide 50 % of the water in California
- Account for 25 percent of National Forest recreation nationwide and about half the public wildland recreation in the state.
- FY14: provided 588,000 ccf of sawtimber (67%), biomass (19%) and firewood (14%).
- FY13: provided 368 permittees with grazing opportunities for close to 100,000 animals
- Energy: hydropower from over 100 projects provides electricity to homes and businesses in the state.

Other Ways to Think About Contributions

California Children's Outdoor Bill of Rights

Every child should have the opportunity to:

- 1. Play in a safe place
- 2. Explore nature
- 3. Learn to swim
- 4. Go fishing
- 5. Follow a trail
- 6. Camp under the stars
- 7. Ride a bike
- 8. Go boating
- 9. Connect with the past
- 10. Plant a seed

Socioeconomics Program

- Incorporate the stories of people and communities while,

Socioeconomics Program

- Incorporate the stories of people and communities while,
- making it easier for forests to effectively and accurately include socioeconomics and

Socioeconomics Program

- Incorporate the stories of people and communities while,
- making it easier for forests to effectively and accurately include socioeconomics and
- do so consistently.

Socioeconomics in Planning

- Sustainability of Benefits to People – why do we plan?

Socioeconomics in Planning

- Sustainability of Benefits to People – why do we plan?
- Efforts Underway
 - I. Key Forest Roles and Contributions

Socioeconomics in Planning

- Sustainability of Benefits to People – why do we plan?
- Efforts Underway
 - I. Key Forest Roles and Contributions
 - II. Stakeholder Important Areas and Activities

Socioeconomics in Planning

- Sustainability of Benefits to People – why do we plan?
- Efforts Underway
 - I. Key Forest Roles and Contributions
 - II. Stakeholder Important Areas and Activities
 - III. Outreach to Underserved Communities

I. Key Forest Roles and Contributions

- Identifies the benefits forests provide
- Part of Each Forest Plan – 2012 Planning Rule

I. Key Forest Roles and Contributions

- Identifies the benefits forests provide
- Part of Each Forest Plan – 2012 Planning Rule
- What are the key benefits, what threatens those benefits and what can planning do to improve sustainability

I. Key Forest Roles and Contributions

- Identifies the benefits forests provide
- Part of Each Forest Plan – 2012 Planning Rule
- What are the key benefits, what threatens those benefits and what can planning do to improve sustainability
- **HOW:** Collaborative process between forest and stakeholders

II. Stakeholder Important Areas and Activities

- Key activities and locations on the forest

II. Stakeholder Important Areas and Activities

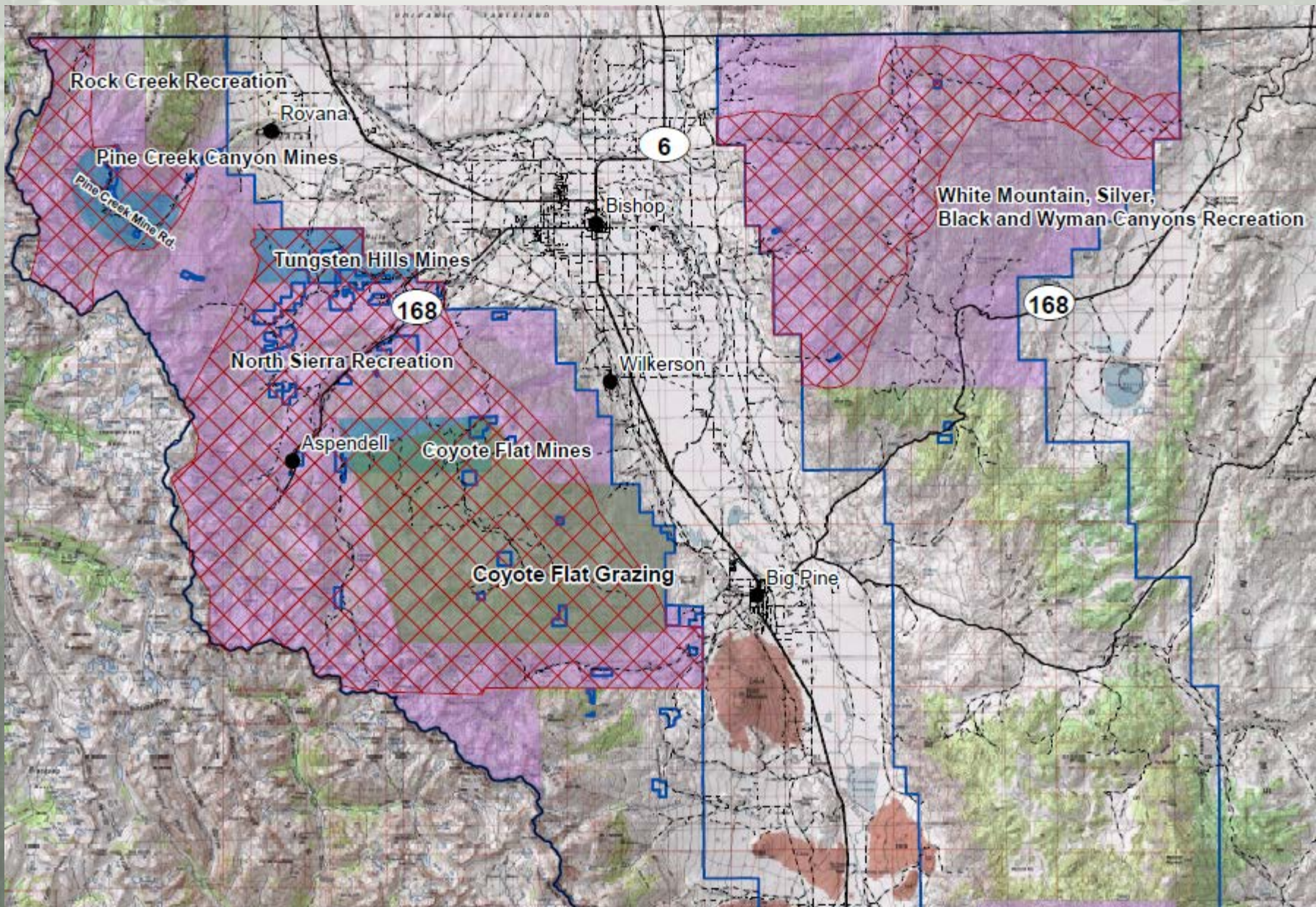
- Key activities and locations on the forest
- Collaboratively develop a common understanding

II. Stakeholder Important Areas and Activities

- Key activities and locations on the forest
- Collaboratively develop a common understanding
- A useful tool for communicating and analysis

II. Stakeholder Important Areas and Activities

- Key activities and locations on the forest
- Collaboratively develop a common understanding
- A useful tool for communicating and analysis
- **HOW:** Inyo County Example
 - Recreation
 - Agriculture (grazing)
 - Mining



Key Location	Key Activity in Location	Economic Contributions	Social Contributions
Rock Creek Recreation	<p>There is a resort in this area with access from the north in Mono County. This area is important for lake and water activities and has what is often considered to be the best restaurant in the County. The area is also very important for day hiking, backpacking, equestrian use, rock climbing and pack trains. There is a pack station located here.</p>	<p>Recreational activities in this area support the local economy through visitor spending as well as tax revenues.</p>	<p>Activities in this area provide social benefits to communities and local users through Rock Creek Resort historical ties, a pack station, and recreational activities (e.g. fishing, swimming, boating, trailhead access for hiking).</p>

III. Outreach to Underserved Communities

- Work with local communities to understand everyone's connection to forests
- **HOW:** Outreach for Plan Revision
 - Identify these communities
 - Contacting to discuss connections to forest
 - Establishing long-term relationships

Socioeconomics and Projects

- Incorporating the “people side” of the story in projects
- Example: Fuels Management Project

Socioeconomics and Projects

- Incorporating the “people side” of the story in projects
- Example: Fuels Management Project
 - short-term effects in terms of restricted access and opportunity during the project, changes in the look of the landscape, changes in economic contributions

Socioeconomics and Projects

- Incorporating the “people side” of the story in projects
- Example: Fuels Management Project
 - short-term effects in terms of restricted access and opportunity during the project, changes in the look of the landscape, changes in economic contributions
 - longer-term effects from reduced wildfire risk resulting in water quality protection, reduced costs associated with erosion, sustainability of recreational opportunities, smoke reduction, improved forest and energy infrastructure protection, and safety.

Things to Consider When Developing

- **Criteria for analysis** – What are yellow flags that suggest the need for socioeconomics

Things to Consider When Developing

- **Criteria for analysis** – What are yellow flags that suggest the need for socioeconomics
- **Study Areas** – what is “local”

Things to Consider When Developing

- **Criteria for analysis** – What are yellow flags that suggest the need for socioeconomics
- **Study Areas** – what is “local”
- **Socioeconomic Context/Data** – what we use to describe economic context

Things to Consider When Developing

- **Criteria for analysis** – What are yellow flags that suggest the need for socioeconomics
- **Study Areas** – what is “local”
- **Socioeconomic Context/Data** – what we use to describe economic context
- **Effects Analysis** – what are the key effects that need to be examined

Things to Consider When Developing

- **Criteria for analysis** – What are yellow flags that suggest the need for socioeconomics
- **Study Areas** – what is “local”
- **Socioeconomic Context/Data** – what we use to describe economic context
- **Effects Analysis** – what are the key effects that need to be examined
- **Process** – including economics is “easier” and more consistent

Potential Process

- Guidance
- Templates
- Data
- Training
- Regional Economics Website

Suggestions for Today

- Make sure the contributions important to you are discussed today (incorporate your story)

Suggestions for Today

- Make sure the contributions important to you are discussed today (incorporate your story)
- Think about the examples I presented and your involvement going forward – where do you want to participate?

Suggestions for Today

- Make sure the contributions important to you are discussed today (incorporate your story)
- Think about the examples I presented and your involvement going forward – where do you want to participate?
- Are there more opportunities for future roundtables – what else do we need to discuss, who else needs to be involved (what voices are we missing)?